

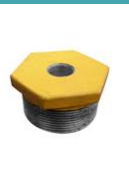


Instalaciones para gas - Accesorios epoxi i.a.b.



BRIDA I.A.B.

CÓDIGO	DESCRIPCIÓN	MOD	PRECIO
8232112	BRIDA I.A.B. EPOXY 1/2	100	\$4,447.37
8232134	BRIDA I.A.B. EPOXY 3/4	70	\$5,464.13
823211	BRIDA I.A.B. EPOXY 1	50	\$7,268.97
82321114	BRIDA I.A.B. EPOXY 1 1/4	40	\$10,481.30
82321112	BRIDA I.A.B. EPOXY 1 1/2	30	\$13,162.37
823212	BRIDA I.A.B. EPOXY 2	20	\$17,849.69



BUJE I.A.B. MH

CÓDIGO	DESCRIPCIÓN	MOD	PRECIO
822413412	BUJE I.A.B. MH EPOXY 3/4 X 1/2	500	\$1,290.82
822410112	BUJE I.A.B. MH EPOXY 1 X 1/2	200	\$2,017.44
82241134	BUJE I.A.B. MH EPOXY 1 X 3/4	200	\$1,935.33
8224111412	BUJE I.A.B. MH EPOXY 1 1/4 X 1/2	150	\$3,147.52
8224111434	BUJE I.A.B. MH EPOXY 1 1/4 X 3/4	150	\$3,067.58
822411141	BUJE I.A.B. MH EPOXY 1 1/4 X 1	150	\$2,978.02
8224111212	BUJE I.A.B. MH EPOXY 1 1/2 X 1/2	100	\$4,031.52
8224111234	BUJE I.A.B. MH EPOXY 1 1/2 X 3/4	100	\$3,869.46
822411121	BUJE I.A.B. MH EPOXY 1 1/2 X 1	100	\$3,669.04
82241112114	BUJE I.A.B. MH EPOXY 1 1/2 X 1 1/4	100	\$3,669.04
822410212	BUJE I.A.B. MH EPOXY 2 X 1/2	50	\$5,648.75
82241234	BUJE I.A.B. MH EPOXY 2 X 3/4	50	\$5,648.75
8224121	BUJE I.A.B. MH EPOXY 2 X 1	50	\$6,451.10
822412114	BUJE I.A.B. MH EPOXY 2 X 1 1/4	50	\$5,648.75
822412112	BUJE I.A.B. MH EPOXY 2 X 1 1/2	50	\$5,648.75
8224121212	BUJE I.A.B. MH EPOXY 2 1/2 X 1/2	25	\$12,094.19
8224121234	BUJE I.A.B. MH EPOXY 2 1/2 X 3/4	25	\$12,094.19
822412121	BUJE I.A.B. MH EPOXY 2 1/2 X 1	25	\$12,094.19
82241212114	BUJE I.A.B. MH EPOXY 2 1/2 X 1 1/4	25	\$12,094.19
82241212112	BUJE I.A.B. MH EPOXY 2 1/2 X 1 1/2	25	\$12,094.19
822412122	BUJE I.A.B. MH EPOXY 2 1/2 X 2	25	\$12,094.19
8224131	BUJE I.A.B. MH EPOXY 3 X 1	20	\$19,348.07
822413114	BUJE I.A.B. MH EPOXY 3 X 1 1/4	20	\$19,347.58
822413112	BUJE I.A.B. MH EPOXY 3 X 1 1/2	20	\$21,424.77
8224132	BUJE I.A.B. MH EPOXY 3 X 2	20	\$21,424.77



BUJE I.A.B. MH (CONT.)

CÓDIGO	DESCRIPCIÓN	MOD	PRECIO
822413212	BUJE I.A.B. MH EPOXY 3 X 2 1/2	20	\$21,424.74
8224141	BUJE I.A.B. MH EPOXY 4 X 1	15	\$41,764.34
822414114	BUJE I.A.B. MH EPOXY 4 X 1 1/4	15	\$41,764.34
822414112	BUJE I.A.B. MH EPOXY 4 X 1 1/2	15	\$41,764.34
8224142	BUJE I.A.B. MH EPOXY 4 X 2	15	\$41,764.34
822414212	BUJE I.A.B. MH EPOXY 4 X 2 1/2	15	\$41,764.34
8224143	BUJE I.A.B. MH EPOXY 4 X 3	15	\$41,764.34

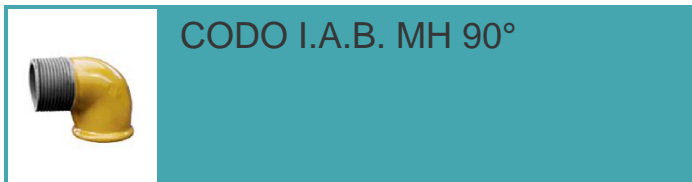


CODO I.A.B. HH 90°

CÓDIGO	DESCRIPCIÓN	MOD	PRECIO
829012	CODO I.A.B. HH 90° EPOXY 1/2	250	\$1,729.15
829034	CODO I.A.B. HH 90° EPOXY 3/4	150	\$2,253.56
82901	CODO I.A.B. HH 90° EPOXY 1	90	\$4,363.57
8290114	CODO I.A.B. HH 90° EPOXY 1 1/4	50	\$6,042.59
8290112	CODO I.A.B. HH 90° EPOXY 1 1/2	35	\$7,633.37
82902	CODO I.A.B. HH 90° EPOXY 2	24	\$11,292.68
8290212	CODO I.A.B. HH 90° EPOXY 2 1/2	10	\$26,022.98
82903	CODO I.A.B. HH 90° EPOXY 3	6	\$39,216.48
82904	CODO I.A.B. HH 90° EPOXY 4	3	\$66,912.83

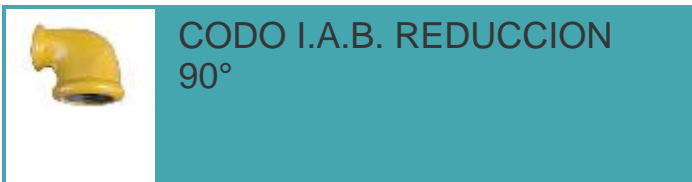


Instalaciones para gas - Accesorios epoxi i.a.b.



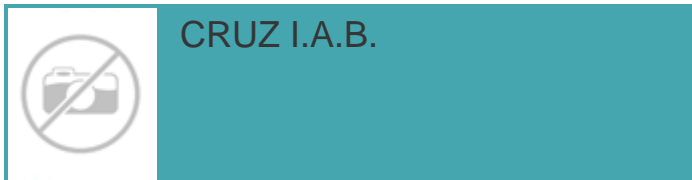
CODO I.A.B. MH 90°

CÓDIGO	DESCRIPCIÓN	MOD	PRECIO
829212	CODO I.A.B. MH 90° EPOXY 1/2	250	\$2,419.94
829234	CODO I.A.B. MH 90° EPOXY 3/4	150	\$2,581.16
82921	CODO I.A.B. MH 90° EPOXY 1	90	\$4,355.28
8292114	CODO I.A.B. MH 90° EPOXY 1 1/4	50	\$7,776.43
8292112	CODO I.A.B. MH 90° EPOXY 1 1/2	40	\$9,207.79
82922	CODO I.A.B. MH 90° EPOXY 2	20	\$14,756.27
8292212	CODO I.A.B. MH 90° EPOXY 2 1/2	10	\$33,388.73
82923	CODO I.A.B. MH 90° EPOXY 3	8	\$45,680.45



CODO I.A.B. REDUCCION 90°

CÓDIGO	DESCRIPCIÓN	MOD	PRECIO
82903412	CODO I.A.B. RED.90° EPOXY 3/4 X 1/2	200	\$2,546.66
82900112	CODO I.A.B. RED.90° EPOXY 1 X 1/2	150	\$3,622.16
8290134	CODO I.A.B. RED.90° EPOXY 1 X 3/4	125	\$3,622.16
829011412	CODO I.A.B. RED.90° EPOXY 1 1/4 X 1/2	1	\$9,159.82
82901141	CODO I.A.B. RED.90° EPOXY 1 1/4 X 1	70	\$9,159.82



CRUZ I.A.B.

CÓDIGO	DESCRIPCIÓN	MOD	PRECIO
8218012	CRUZ I.A.B. HHHH EPOXY 1/2	125	\$4,226.52
8218034	CRUZ I.A.B. HHHH EPOXY 3/4	80	\$6,708.73
821801	CRUZ I.A.B. HHHH EPOXY 1	50	\$8,169.79
82180114	CRUZ I.A.B. HHHH EPOXY 1 1/4	30	\$12,269.24
82180112	CRUZ I.A.B. HHHH EPOXY 1 1/2	20	\$18,740.18
821802	CRUZ I.A.B. HHHH EPOXY 2	15	\$24,946.99



CUPLA I.A.B. HH

CÓDIGO	DESCRIPCIÓN	MOD	PRECIO
8227012	CUPLA I.A.B. HH EPOXY 1/2	350	\$1,954.81
8227034	CUPLA I.A.B. HH EPOXY 3/4	200	\$2,181.79
822701	CUPLA I.A.B. HH EPOXY 1	150	\$3,224.47
82270114	CUPLA I.A.B. HH EPOXY 1 1/4	70	\$5,334.84
82270112	CUPLA I.A.B. HH EPOXY 1 1/2	50	\$7,209.34
822702	CUPLA I.A.B. HH EPOXY 2	30	\$11,689.17
82270212	CUPLA I.A.B. HH EPOXY 2 1/2	20	\$24,441.70
822703	CUPLA I.A.B. HH EPOXY 3	15	\$29,997.52
822704	CUPLA I.A.B. HH EPOXY 4	10	\$66,205.20



Instalaciones para gas - Accesorios epoxi i.a.b.



CUPLA I.A.B. RED.

CÓDIGO	DESCRIPCIÓN	MOD	PRECIO
822403412	CUPLA I.A.B. RED. EPOXY 3/4 X 1/2	200	\$2,215.09
822400112	CUPLA I.A.B. RED. EPOXY 1 X 1/2	150	\$2,894.59
82240134	CUPLA I.A.B. RED. EPOXY 1 X 3/4	150	\$2,894.59
8224011412	CUPLA I.A.B. RED. EPOXY 1 1/4 X 1/2	100	\$4,419.35
8224011434	CUPLA I.A.B. RED. EPOXY 1 1/4 X 3/4	100	\$4,419.35
822401141	CUPLA I.A.B. RED. EPOXY 1 1/4 X 1	100	\$4,419.35
8224011212	CUPLA I.A.B. RED. EPOXY 1 1/2 X 1/2	70	\$5,504.84
8224011234	CUPLA I.A.B. RED. EPOXY 1 1/2 X 3/4	70	\$5,504.84
822401121	CUPLA I.A.B. RED. EPOXY 1 1/2 X 1	70	\$5,504.84
82240112114	CUPLA I.A.B. RED. EPOXY 1 1/2 X 1 1/4	70	\$5,504.84
822400212	CUPLA I.A.B. RED. EPOXY 2 X 1/2	1	\$8,721.86
82240234	CUPLA I.A.B. RED. EPOXY 2 X 3/4	1	\$8,721.86
8224021	CUPLA I.A.B. RED. EPOXY 2 X 1	1	\$8,721.86
822402114	CUPLA I.A.B. RED. EPOXY 2 X 1 1/4	1	\$8,721.86
822402112	CUPLA I.A.B. RED. EPOXY 2 X 1 1/2	1	\$8,721.86



CURVA I.A.B. HH 45°

CÓDIGO	DESCRIPCIÓN	MOD	PRECIO
824112	CURVA I.A.B. HH 45° EPOXY 1/2	200	\$3,224.47
824134	CURVA I.A.B. HH 45° EPOXY 3/4	100	\$4,435.71
82411	CURVA I.A.B. HH 45° EPOXY 1	60	\$6,851.32
8241114	CURVA I.A.B. HH 45° EPOXY 1 1/4	40	\$11,292.68
8241112	CURVA I.A.B. HH 45° EPOXY 1 1/2	30	\$15,393.80
82412	CURVA I.A.B. HH 45° EPOXY 2	14	\$22,696.56
8241212	CURVA I.A.B. HH 45° EPOXY 2 1/2	8	\$44,336.97
82413	CURVA I.A.B. HH 45° EPOXY 3	6	\$88,684.64
82414	CURVA I.A.B. HH 45° EPOXY 4	3	\$161,239.36



CURVA I.A.B. HH 90°

CÓDIGO	DESCRIPCIÓN	MOD	PRECIO
82212	CURVA I.A.B. HH 90° EPOXY 1/2	150	\$3,224.47
82234	CURVA I.A.B. HH 90° EPOXY 3/4	75	\$4,679.51
8221	CURVA I.A.B. HH 90° EPOXY 1	50	\$7,268.97
822114	CURVA I.A.B. HH 90° EPOXY 1 1/4	25	\$11,957.14
822112	CURVA I.A.B. HH 90° EPOXY 1 1/2	20	\$15,319.02
8222	CURVA I.A.B. HH 90° EPOXY 2	10	\$26,086.58
822212	CURVA I.A.B. HH 90° EPOXY 2 1/2	6	\$55,955.20
8223	CURVA I.A.B. HH 90° EPOXY 3	3	\$94,620.48
8224	CURVA I.A.B. HH 90° EPOXY 4	1	\$193,543.09



CURVA I.A.B. MH 45°

CÓDIGO	DESCRIPCIÓN	MOD	PRECIO
824012	CURVA I.A.B. MH 45° EPOXY 1/2	200	\$3,224.47
824034	CURVA I.A.B. MH 45° EPOXY 3/4	120	\$4,712.34
82401	CURVA I.A.B. MH 45° EPOXY 1	80	\$6,451.10
8240114	CURVA I.A.B. MH 45° EPOXY 1 1/4	40	\$10,481.30
8240112	CURVA I.A.B. MH 45° EPOXY 1 1/2	30	\$16,120.90
82402	CURVA I.A.B. MH 45° EPOXY 2	15	\$25,799.97
8240212	CURVA I.A.B. MH 45° EPOXY 2 1/2	1	\$53,417.20
82403	CURVA I.A.B. MH 45° EPOXY 3	1	\$73,107.62
82404	CURVA I.A.B. MH 45° EPOXY 4	3	\$138,523.32



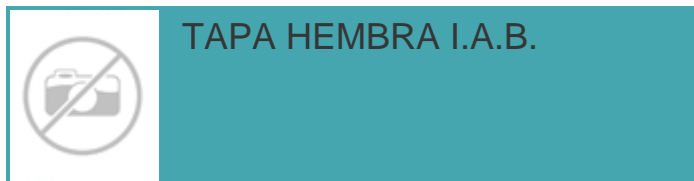
Instalaciones para gas - Accesorios epoxi i.a.b.



CÓDIGO	DESCRIPCIÓN	MOD	PRECIO
82112	CURVA I.A.B. MH 90° EPOXY 1/2	200	\$3,187.32
82134	CURVA I.A.B. MH 90° EPOXY 3/4	100	\$4,452.54
8211	CURVA I.A.B. MH 90° EPOXY 1	50	\$8,194.44
821114	CURVA I.A.B. MH 90° EPOXY 1 1/4	30	\$13,094.92
821112	CURVA I.A.B. MH 90° EPOXY 1 1/2	20	\$17,491.80
8212	CURVA I.A.B. MH 90° EPOXY 2	10	\$26,380.87
821212	CURVA I.A.B. MH 90° EPOXY 2 1/2	6	\$58,855.44
8213	CURVA I.A.B. MH 90° EPOXY 3	3	\$88,684.64



CÓDIGO	DESCRIPCIÓN	MOD	PRECIO
8228012	NIPLE C/TUERCA I.A.B. EPOXY 1/2	350	\$1,773.63
8228034	NIPLE C/TUERCA I.A.B. EPOXY 3/4	250	\$2,017.44
822801	NIPLE C/TUERCA I.A.B. EPOXY 1	125	\$2,805.62
82280114	NIPLE C/TUERCA I.A.B. EPOXY 1 1/4	80	\$4,549.72
82280112	NIPLE C/TUERCA I.A.B. EPOXY 1 1/2	50	\$6,010.13
822802	NIPLE C/TUERCA I.A.B. EPOXY 2	30	\$8,698.54
82280212	NIPLE C/TUERCA I.A.B. EPOXY 2 1/2	15	\$15,577.51
822803	NIPLE C/TUERCA I.A.B. EPOXY 3	10	\$21,414.40
822804	NIPLE C/TUERCA I.A.B. EPOXY 4	8	\$59,457.15



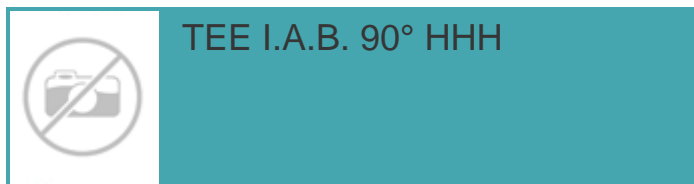
CÓDIGO	DESCRIPCIÓN	MOD	PRECIO
8230112	TAPA HEMBRA I.A.B. EPOXY 1/2	500	\$1,262.69
8230134	TAPA HEMBRA I.A.B. EPOXY 3/4	300	\$1,630.21
823011	TAPA HEMBRA I.A.B. EPOXY 1	250	\$2,181.79
82301114	TAPA HEMBRA I.A.B. EPOXY 1 1/4	150	\$3,428.49
82301112	TAPA HEMBRA I.A.B. EPOXY 1 1/2	100	\$4,885.33
823012	TAPA HEMBRA I.A.B. EPOXY 2	60	\$7,288.81
82301212	TAPA HEMBRA I.A.B. EPOXY 2 1/2	30	\$14,574.26
823013	TAPA HEMBRA I.A.B. EPOXY 3	30	\$23,864.52
823014	TAPA HEMBRA I.A.B. EPOXY 4	15	\$39,334.06



CÓDIGO	DESCRIPCIÓN	MOD	PRECIO
8229012	TAPON MACHO I.A.B. EPOXY 1/2	500	\$1,005.53
8229034	TAPON MACHO I.A.B. EPOXY 3/4	300	\$1,572.62
822901	TAPON MACHO I.A.B. EPOXY 1	200	\$1,954.81
82290114	TAPON MACHO I.A.B. EPOXY 1 1/4	100	\$3,037.11
82290112	TAPON MACHO I.A.B. EPOXY 1 1/2	80	\$4,089.60
822902	TAPON MACHO I.A.B. EPOXY 2	50	\$5,748.65
82290212	TAPON MACHO I.A.B. EPOXY 2 1/2	30	\$10,101.76
822903	TAPON MACHO I.A.B. EPOXY 3	20	\$19,842.13
822904	TAPON MACHO I.A.B. EPOXY 4	15	\$30,637.69



Instalaciones para gas - Accesorios epoxi i.a.b.



TEE I.A.B. 90° HHH

CÓDIGO	DESCRIPCIÓN	MOD	PRECIO
8213012	TEE I.A.B. 90° HHH EPOXY 1/2	150	\$2,419.94
8213034	TEE I.A.B. 90° HHH EPOXY 3/4	100	\$3,442.80
821301	TEE I.A.B. 90° HHH EPOXY 1	65	\$5,664.73
82130114	TEE I.A.B. 90° HHH EPOXY 1 1/4	35	\$8,419.26
82130112	TEE I.A.B. 90° HHH EPOXY 1 1/2	20	\$10,481.30
821302	TEE I.A.B. 90° HHH EPOXY 2	15	\$16,927.11
82130212	TEE I.A.B. 90° HHH EPOXY 2 1/2	8	\$33,184.71
821303	TEE I.A.B. 90° HHH EPOXY 3	5	\$44,297.18
821304	TEE I.A.B. 90° HHH EPOXY 4	3	\$79,628.17



TEE I.A.B. RED. 90°

CÓDIGO	DESCRIPCIÓN	MOD	PRECIO
821303412	TEE I.A.B. RED. 90° HHH EPOXY 3/4 X 1/2	125	\$3,292.75
82131341212	TEE I.A.B. RED. 90° HHH EPOXY 3/4X1/2X1/2	125	\$3,885.81
82131343412	TEE I.A.B. RED. 90° HHH EPOXY 3/4X3/4X1/2	125	\$3,885.81
821300112	TEE I.A.B. RED. 90° HHH EPOXY 1 X 1/2	80	\$4,689.01
82130134	TEE I.A.B. RED. 90° HHH EPOXY 1 X 3/4	80	\$4,689.01
8213011412	TEE I.A.B. RED. 90° HHH EPOXY 1 1/4 X 1/2	50	\$7,067.96
8213011434	TEE I.A.B. RED. 90° HHH EPOXY 1 1/4 X 3/4	40	\$7,067.96
821301141	TEE I.A.B. RED. 90° HHH EPOXY 1 1/4 X 1	40	\$7,067.96
8213011212	TEE I.A.B. RED. 90° HHH EPOXY 1 1/2 X 1/2	30	\$8,916.37
8213011234	TEE I.A.B. RED. 90° HHH EPOXY 1 1/2 X 3/4	30	\$8,916.37
821301121	TEE I.A.B. RED. 90° HHH EPOXY 1 1/2 X 1	30	\$8,916.37
82130112114	TEE I.A.B. RED. 90° HHH EPOXY 1 1/2 X 1 1/4	30	\$8,916.37
821300212	TEE I.A.B. RED. 90° HHH EPOXY 2 X 1/2	20	\$18,947.61
82130234	TEE I.A.B. RED. 90° HHH EPOXY 2 X 3/4	20	\$18,947.61
8213021	TEE I.A.B. RED. 90° HHH EPOXY 2 X 1	20	\$18,947.61
821302114	TEE I.A.B. RED. 90° HHH EPOXY 2 X 1 1/4	20	\$18,947.61
821302112	TEE I.A.B. RED. 90° HHH EPOXY 2 X 1 1/2	20	\$18,947.61



Instalaciones para gas - Accesorios epoxi i.a.b.



TUERCA I.A.B.

CÓDIGO	DESCRIPCIÓN	MOD	PRECIO
8231012	TUERCA I.A.B. EPOXY 1/2	500	\$1,241.05
8231034	TUERCA I.A.B. EPOXY 3/4	50	\$1,419.22
823101	TUERCA I.A.B. EPOXY 1	300	\$1,705.82
82310114	TUERCA I.A.B. EPOXY 1 1/4	250	\$2,193.45
82310112	TUERCA I.A.B. EPOXY 1 1/2	200	\$2,598.96
823102	TUERCA I.A.B. EPOXY 2	100	\$4,148.25



UNION DOBLE I.A.B. HH

CÓDIGO	DESCRIPCIÓN	MOD	PRECIO
8234012	UNION DOBLE I.A.B. HH EPOXY 1/2	100	\$6,363.55
8234034	UNION DOBLE I.A.B. HH EPOXY 3/4	80	\$7,585.35
823401	UNION DOBLE I.A.B. HH EPOXY 1	600	\$9,672.60
82340114	UNION DOBLE I.A.B. HH EPOXY 1 1/4	30	\$16,290.69
82340112	UNION DOBLE I.A.B. HH EPOXY 1 1/2	25	\$19,599.74
823402	UNION DOBLE I.A.B. HH EPOXY 2	18	\$27,490.54
82340212	UNION DOBLE I.A.B. HH EPOXY 2 1/2	10	\$62,194.00
823403	UNION DOBLE I.A.B. HH EPOXY 3	7	\$93,487.38
823404	UNION DOBLE I.A.B. HH EPOXY 4	2	\$185,162.66